



COWAN GROUP ENGINEERING
 7100 N. CLASSEN, SUITE 500
 OKLAHOMA CITY, OK 73116
 405-463-3369 D 405-463-3381 F
 WWW.COWANGROUP.CO
 CA# 6414 EXPIRES 6/30/2022

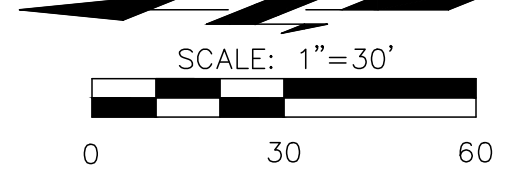
MOORE PUBLIC SCHOOL
 HIGHLAND WEST JUNIOR HIGH SCHOOL
 901 N. SANTA FE AVE, MOORE, OK 73160

TOPOGRAPHIC SURVEY

SURVEYED BY	JRS
DRAWN BY	LC
REVIEWED BY	JWS
PROJECT NUMBER	19-790
DATE	05/17/2021

REVISIONS	
SHEET NUMBER	1 OF 1

S:\SURVEY\RAW FILES\19-790_ASP_ON-DEMAND SURVEY\HIGHLAND WEST\CAD\ASP-HIGHLAND WEST-051821.DWG



0 30 60

SMWH
 RIM ELEV. = 1247.75'
 FL N = 1240.65' (24" RCP)
 FL S = 1247.75' (42" RCP)

BM 2
 "X" CUT ON CONC. SIDEWALK
 ELEV.=1248.00'

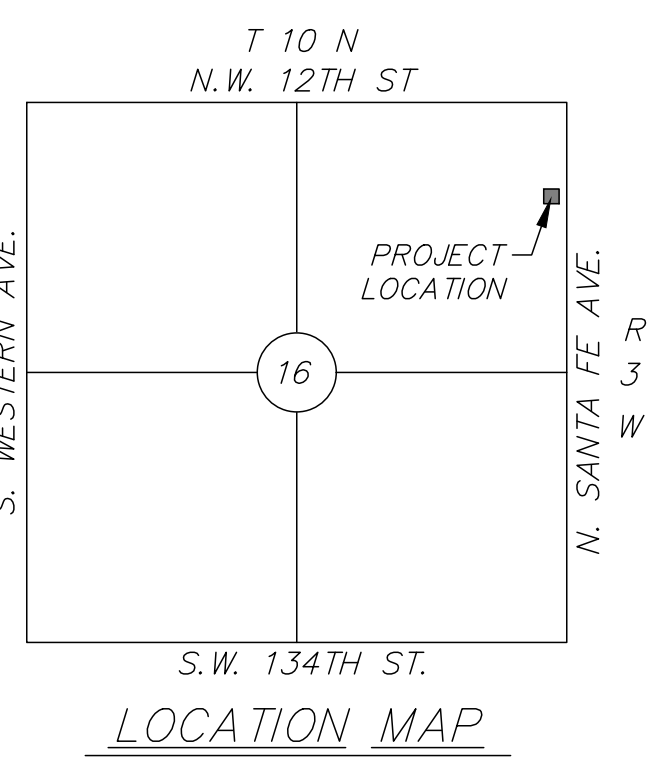
LEGEND

- ◆ BENCHMARK
- CO CLEANOUT
- CONTOUR LINE WITH ELEVATION
- HC ♿ HANDICAP PARKING SIGN
- TELE PED ⓧ TELEPHONE PEDESTAL
- TELE VAULT ⓧ ELECTRIC VAULT
- ELEC VAULT ⓧ ELECTRIC VAULT
- ELEC OUTLET ⓧ ELECTRIC OUTLET
- OVERHEAD POWERLINE
- PP ○ POWER POLE
- TUG --- UNDERGROUND TELEPHONE LINE
- GM ○ GAS METER
- GAS VALVE
- UNDERGROUND GAS LINE
- WV ○ WATER VALVE
- SPK ○ SPRINKLER HEAD
- SSMH ○ STORM WATER MANHOLE
- W --- UNDERGROUND WATER LINE
- SSMH ○ SANITARY SEWER MANHOLE
- CO ○ CLEANOUT
- SS --- UNDERGROUND SANITARY SEWER LINE
- CP --- CASTIRON PIPE
- RCP --- REINFORCED CONCRETE PIPE
- LP ○ LIGHT POLE
- UNDERGROUND POWER LINE
- EXISTING WROUGHT IRON FENCE
- FF --- FINISH FLOOR
- QUADRANT
- SIGN
- SMALL BUSH
- TREE WITH SIZE
- HEDGES
- WMO --- WATER METER
- SPS --- WATER SPROUT
- IVC --- IRRIGATION CONTROL VALVE
- MWH --- WATER MANHOLE
- EXISTING DRAINAGE FLOWLINE WITH DIRECTION
- FIRE HYDRANT

BENCHMARKS

BM 1
 "X" CUT ON CONCRETE SIDEWALK
 N=732420.668
 E=2113951.319
 ELEV=1246.12

BM 2
 "X" CUT ON CONCRETE SIDEWALK
 N=732831.724
 E=2113951.372
 ELEV=1248.00



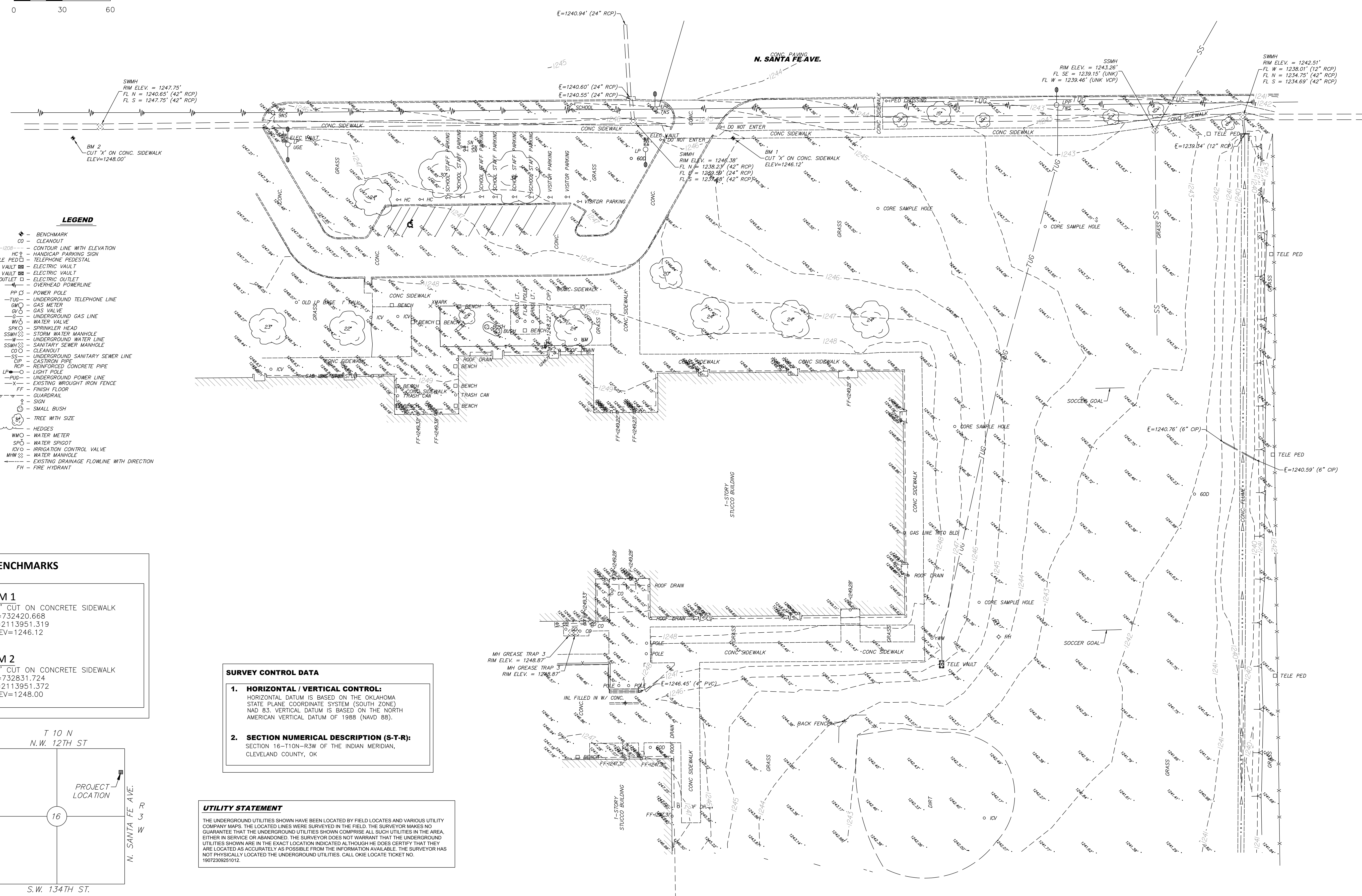
SURVEY CONTROL DATA

1. HORIZONTAL / VERTICAL CONTROL:
 HORIZONTAL DATUM IS BASED ON THE OKLAHOMA STATE PLANE COORDINATE SYSTEM (SOUTH ZONE) NAD 83. VERTICAL DATUM IS BASED ON THE NORTH AMERICAN VERTICAL DATUM OF 1988 (NAVD 88).

2. SECTION NUMERICAL DESCRIPTION (S-T-R):
 SECTION 16-T10N-R3W OF THE INDIAN MERIDIAN, CLEVELAND COUNTY, OK

UTILITY STATEMENT

THE UNDERGROUND UTILITIES SHOWN HAVE BEEN LOCATED BY FIELD LOCATES AND VARIOUS UTILITY COMPANY MAPS. THE LOCATED LINES WERE SURVEYED IN THE FIELD. THE SURVEYOR MAKES NO GUARANTEE THAT THE UNDERGROUND UTILITIES SHOWN COMPRISE ALL SUCH UTILITIES IN THE AREA, EITHER IN SERVICE OR ABANDONED. THE SURVEYOR DOES NOT WARRANT THAT THE UNDERGROUND UTILITIES SHOWN ARE IN THE EXACT LOCATION INDICATED ALTHOUGH HE DOES CERTIFY THAT THEY ARE LOCATED AS ACCURATELY AS POSSIBLE FROM THE INFORMATION AVAILABLE. THE SURVEYOR HAS NOT PHYSICALLY LOCATED THE UNDERGROUND UTILITIES. CALL OKIE LOCATE TICKET NO. 19072309251012.



PLOTTED: May 18, 2021